

Slow Speed Shaft Direction	
Horizontal, slow speed shaft level	H
Vertical, slow speed shaft down	V
Vertical, slow speed shaft up	W
Universal mounting	N

Mounting style	
Foot	H
V flange	V
Flange	F

Type of Input	
Gearmotor	M
With adaptor	JM

Special Specifications	
Standard specification	blank
Special specification	S

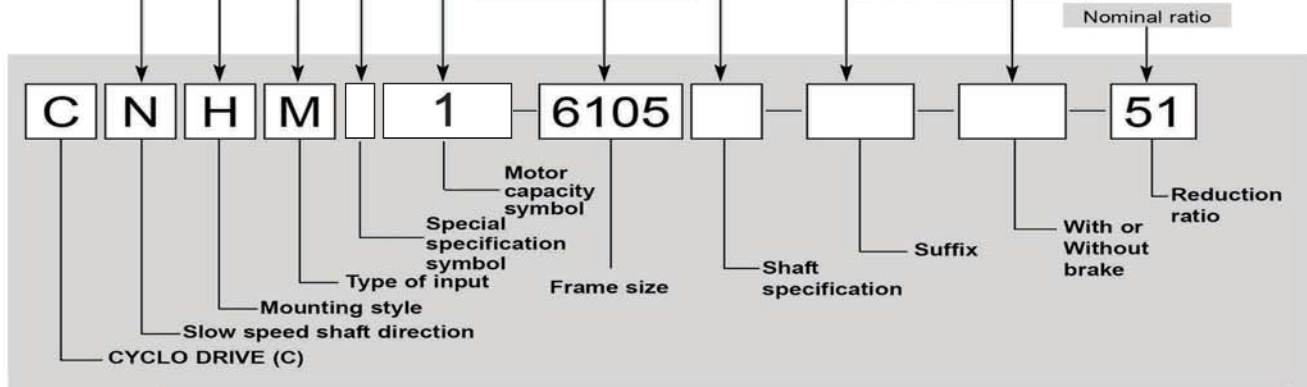
		Motor Capacity Symbol						
4P	Capacity symbol	01	02	03	05	08	1	
	kW (HP)	0.1 (1/8)	0.2 (1/4)	0.25 (1/3)	0.4 (1/2)	0.55 (3/4)	0.75 (1)	
	Capacity symbol	1H	2	3	4	5	8	
	kW (HP)	1.1 (1.5)	1.5 (2)	2.2 (3)	3.0 (4)	3.7 (5)	5.5 (7.5)	
	Capacity symbol	10	15	20	25	30	40	
	kW (HP)	7.5 (10)	11 (15)	15 (20)	18.5 (25)	22 (30)	30 (40)	
6P	Capacity symbol	50	60	75	100			
	kW (HP)	37 (50)	45 (60)	55 (75)	75 (100)			
	Capacity symbol	016	026	036	056	086	16	
	kW (HP)	0.1 (1/8)	0.2 (1/4)	0.25 (1/3)	0.4 (1/2)	0.55 (3/4)	0.75 (1)	
	Capacity symbol	1H6	26	36	46	56	86	
	kW (HP)	1.1 (1.5)	1.5 (2)	2.2 (3)	3.0 (4)	3.7 (5)	5.5 (7.5)	
6P	Capacity symbol	106	156	206	256	306	406	
	kW (HP)	7.5 (10)	11 (15)	15 (20)	18.5 (25)	22 (30)	30 (40)	
	Capacity symbol	506	606	756	1006	1256	1506	
	kW (HP)	37 (50)	45 (60)	55 (75)	75 (100)	90 (125)	110 (150)	
	Capacity symbol	1756						
	kW (HP)	132 (175)						

Shaft specification	
Metric JIS (Standard)	-
Inch size	Y
Metric DIN	G

Suffix		
Standard	-	Low Backlash
Light Heavy Radial	R1	With AF (inverter) motor
High Cap. Brg. Ductile Casing	R2	Servo Motor
Baseplate	BP	DC Motor
HH Type Ceiling	H1	High Efficiency Motor
Modification Left Wall	H2	Torque Limiter
Modification Right Wall	H3	

With or Without Brake	
Without brake	-
With brake	B

Frame size
(Refer to Selection
Tables starting from
page B-13.)

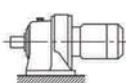


Product and Nomenclature Symbol Examples (Gearmotor)

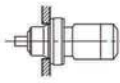
Standard and various application products of CYCLO GEARMOTOR are classified by their nomenclature symbol as below. Refer to specific catalogs or consult us for details on our application products.

CYCLO® GEARMOTORS

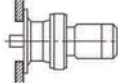
CHHM
(CNHM)



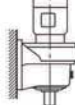
CHFM
(CNFM)



CHVM
(CNVM)



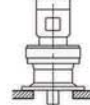
CVHM
(CNHM)



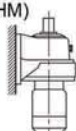
CVFM
(CNFM)



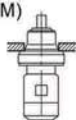
CVVM
(CNVM)



CWHM
(CNHM)



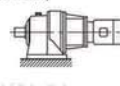
CWFM
(CNFM)



CWVM
(CNVM)

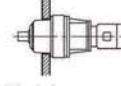


CHHJM
(CNHJM)



With Adaptor

CHFJM
(CNFJM)



With Adaptor

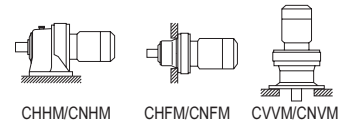
CVVJM
(CNVJM)



With Adaptor

Selection Tables Gearmotors #CNHM1, #CHHM1, #CNVM1, #CVVM1

0.55 kW	Hz		50Hz		60Hz	
	P		4	6	4	6
	n ₁	r/min	1450	980	1750	1165

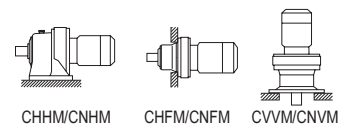


50Hz						60Hz						Nomenclature			Page of Dimension Sheet					
Output Speed n ₂	Output Torque Tout		Allowable Radial Load Pro		SF	Output Speed n ₂	Output Torque Tout		Allowable Radial Load Pro		SF	Input Capacity Symbol	Frame Size	Reduction Ratio	CNHM	CNFM	CNVM			
r/min	N·m	kgf·m	N	kgf		r/min	N·m	kgf·m	N	kgf					CHHM	CHFM	CVVM			
1.72	1760	179	22100	2250	*1	2.08	1760	179	22100	2250	*1	08 - 6160DA	- 841	B-110	B-126	B-145				
	2100	214	22100	2250	*1		2100	214	22100	2250	*1				08 - 6165DA	- 841	B-110	B-126	B-145	
	2740	279	29500	3010	1.15		2270	232	29500	3010	1.39				08 - 6175DA	- 841	B-110	B-126	B-145	
1.45	2100	214	22100	2250	*1	1.74	2100	214	22100	2250	*1	08 - 6165DA	- 1003	B-110	B-126	B-145				
	2530	258	29500	3010	*1		2530	258	29500	3010	*1				08 - 6170DA	- 1003	B-110	B-126	B-145	
	3270	333	29500	3010	0.96		2710	276	29500	3010	1.16				08 - 6175DA	- 1003	B-110	B-126	B-145	
1.16	2530	258	29500	3010	*1	1.40	2530	258	29500	3010	*1	08 - 6170DA	- 1247	B-110	B-126	B-145				
	3150	321	29500	3010	*1		3150	321	29500	3010	*1				08 - 6175DA	- 1247	B-110	B-126	B-145	
0.980	3150	321	29500	3010	*1	1.18	3150	321	29500	3010	*1	08 - 6175DA	- 1479	B-110	B-126	B-145				
0.784	4060	414	41700	4250	*1	0.946	4060	414	41700	4250	*1	08 - 6180DA	- 1849	B-110	B-126	B-145				

GEARMOTORS

Selection Tables
0.55 kW

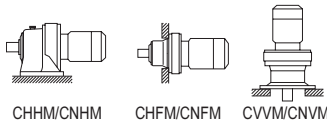
0.75 kW	Hz		50Hz		60Hz	
	P		4	6	4	6
	n ₁	r/min	1450	980	1750	1165



50Hz						60Hz						Nomenclature			Page of Dimension Sheet					
Output Speed n ₂	Output Torque Tout		Alloeeable Radial Load Pro		SF	Output Speed n ₂	Output Torque Tout		Alloeeable Radial Load Pro		SF	Input Capacity Symbol	Frame Size	Reduction Ratio	CNHM	CNFM	CNVM			
r/min	N·m	kgf·m	N	kgf		r/min	N·m	kgf·m	N	kgf					CHHM	CHFM	CVVM			
580	11.7	1.20	1130	115	1.48	700	9.72	0.991	1080	110	1.48	1 - 6070SK	- 2.5 *3	B-98	-	B-133				
			1130	115	1.85				1080	110	1.85				1 - 6075SK	- 2.5 *3	B-98	-	B-133	
			1260	128	2.20				1190	121	2.20				1 - 6080SK	- 2.5 *3	B-98	-	B-133	
			1260	128	2.75				1190	121	2.75				1 - 6085SK	- 2.5 *3	B-98	-	B-133	
			2250	229	3.20				2130	217	3.20				1 - 6090SK	- 2.5 *3	B-98	-	B-133	
			2250	229	3.61				2130	217	3.61				1 - 6095SK	- 2.5 *3	B-98	-	B-133	
483	14.1	1.44	1180	120	1.41	583	11.7	1.19	1120	114	1.41	1 - 6070SK	- 3 *3	B-98	-	B-133				
			1180	120	1.77				1120	114	1.77				1 - 6075SK	- 3 *3	B-98	-	B-133	
			1310	134	2.20				1250	127	2.20				1 - 6080SK	- 3 *3	B-98	-	B-133	
			1310	134	2.75				1250	127	2.75				1 - 6085SK	- 3 *3	B-98	-	B-133	
			2340	239	3.12				2220	226	3.12				1 - 6090SK	- 3 *3	B-98	-	B-133	
			2340	239	3.51				2220	226	3.51				1 - 6095SK	- 3 *3	B-98	-	B-133	
363	18.8	1.91	1270	129	1.25	438	15.6	1.59	1220	124	1.25	1 - 6070SK	- 4 *3	B-98	-	B-133				
			1270	129	1.56				1220	124	1.56				1 - 6075SK	- 4 *3	B-98	-	B-133	
			1420	145	2.20				1350	138	2.20				1 - 6080SK	- 4 *3	B-98	-	B-133	
			1420	145	2.75				1350	138	2.75				1 - 6085SK	- 4 *3	B-98	-	B-133	
			2660	271	3.12				2520	257	3.12				1 - 6090SK	- 4 *3	B-98	-	B-133	
			2660	271	3.51				2520	257	3.51				1 - 6095SK	- 4 *3	B-98	-	B-133	
290	23.5	2.39	1370	140	1.18	350	19.4	1.98	1290	132	1.18	1 - 6070SK	- 5 *3	B-98	-	B-133				
			1370	140	1.48				1290	132	1.48				1 - 6075SK	- 5 *3	B-98	-	B-133	
			1530	156	2.07				1460	149	2.07				1 - 6080SK	- 5 *3	B-98	-	B-133	
			1530	156	2.47				1460	149	2.43				1 - 6085SK	- 5 *3	B-98	-	B-133	
			2820	287	2.98				2680	273	2.98				1 - 6090SK	- 5 *3	B-98	-	B-133	
			2820	287	3.51				2680	273	3.51				1 - 6095SK	- 5 *3	B-98	-	B-133	

1. Combinations in **bold** are the recommended models for operations for 10 hours/day with uniform load (service factor is about 1.0 for motor rating at 50Hz).
2. Motor slippage may affect n₁ and n₂. Refer to technical data for details.
3. CNHM, CHHM, CNFM, CHFM, CNVM, and CVVM indicate types. Refer to page B-10 for details.
4. Lubrication method is different for each model. Refer to "Lubrication" section in page F-4~F-5 for details.
5. "6" at the end of "input capacity symbol" indicates models with 6P motor. Other models come with 4P motor.

Selection Tables Gearmotors #CNHM1, #CHHM1, #CNVM1, #CVVM1



0.75 kW	Hz		50Hz		60Hz	
	P		4	6	4	6
	n ₁	r/min	1450	980	1750	1165

n₁: Motor Speed

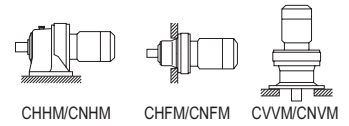
50Hz					60Hz					Nomenclature			Page of Dimension Sheet					
Output Speed n ₂ r/min	Output Torque Tout N·m kgf·m		Allowable Radial Load Pro N kgf		SF	Output Speed n ₂ r/min	Output Torque Tout N·m kgf·m		Allowable Radial Load Pro N kgf		SF	Input Capacity Symbol	Frame Size	Reduction Ratio	CNHM	CNFM	CNVM	
															CHHM	CHFM	CVVM	
242	28.2	2.87	1370	140	1.04	292	23.3	2.38	1290	132	1.04	1 - 6070SK	- 6 *3	B-98	-	B-133		
			1370	140	1.30				1290	132	1.30	1 - 6075SK	- 6 *3	B-98	-	B-133		
			1580	161	1.73				1520	155	1.73	1 - 6080SK	- 6 *3	B-98	-	B-133		
			1580	161	2.16				1520	155	2.16	1 - 6085SK	- 6 *3	B-98	-	B-133		
			2880	294	2.55				2750	280	2.55	1 - 6090SK	- 6 *3	B-98	-	B-133		
			2880	294	3.03				2750	280	3.03	1 - 6095SK	- 6 *3	B-98	-	B-133		
			2880	294	3.56				2750	280	3.56	1 - 6100SK	- 6 *3	B-99	-	B-134		
			1900	193	1.04				1790	182	1.04	1 - 6085	- 6	B-100	B-116	B-135		
			2840	290	1.53				2670	273	1.53	1 - 6090	- 6	B-100	B-116	B-135		
			2840	290	2.03				2670	273	2.03	1 - 6095	- 6	B-100	B-116	B-135		
181	37.5	3.83	1510	154	0.98	219	31.1	3.17	1420	145	0.98	1 - 6075SK	- 8 *3	B-98	-	B-133		
			1660	169	1.46				1590	162	1.46	1 - 6080SK	- 8 *3	B-98	-	B-133		
			1660	169	1.83				1590	162	1.83	1 - 6085SK	- 8 *3	B-98	-	B-133		
			3210	327	2.01				3060	312	2.01	1 - 6090SK	- 8 *3	B-98	-	B-133		
			3210	327	2.36				3060	312	2.36	1 - 6095SK	- 8 *3	B-98	-	B-133		
			3210	327	2.82				3060	312	2.82	1 - 6100SK	- 8 *3	B-99	-	B-134		
			3210	327	3.32				3060	312	3.32	1 - 6105SK	- 8 *3	B-99	-	B-134		
			2050	209	1.04				1930	197	1.04	1 - 6085	- 8	B-100	B-116	B-135		
			3160	322	1.53				2980	304	1.53	1 - 6090	- 8	B-100	B-116	B-135		
			3160	322	2.03				2980	304	2.03	1 - 6095	- 8	B-100	B-116	B-135		
145	46.9	4.78	1740	177	1.17	175	38.9	3.96	1680	171	1.17	1 - 6080SK	- 10 *3	B-98	-	B-133		
			1740	177	1.47				1680	171	1.47	1 - 6085SK	- 10 *3	B-98	-	B-133		
			3380	345	1.87				3240	330	1.87	1 - 6090SK	- 10 *3	B-98	-	B-133		
			3380	345	2.36				3240	330	2.36	1 - 6095SK	- 10 *3	B-98	-	B-133		
			3380	345	2.64				3240	330	2.64	1 - 6100SK	- 10 *3	B-99	-	B-134		
3380	345	2.93	3240	330	2.93	1 - 6105SK	- 10 *3	B-99	-	B-134								
132	51.6	5.26	2250	230	1.04	159	42.8	4.36	2130	217	1.04	1 - 6085	- 11	B-100	B-116	B-135		
			3340	340	1.53				3340	340	1.53	1 - 6090	- 11	B-100	B-116	B-135		
			3340	340	2.03				3340	340	2.03	1 - 6095	- 11	B-100	B-116	B-135		
112	61.0	6.22	2410	246	1.04	135	50.5	5.15	2280	233	1.04	1 - 6085	- 13	B-100	B-116	B-135		
			3340	340	1.53				3340	340	1.53	1 - 6090	- 13	B-100	B-116	B-135		
			3340	340	2.03				3340	340	2.03	1 - 6095	- 13	B-100	B-116	B-135		
96.7	70.4	7.18	2490	253	1.04	117	58.3	5.95	2350	240	1.04	1 - 6085	- 15	B-100	B-116	B-135		
			3340	340	1.53				3340	340	1.53	1 - 6090	- 15	B-100	B-116	B-135		
			3340	340	2.03				3340	340	2.03	1 - 6095	- 15	B-100	B-116	B-135		
85.3	79.8	8.13	2560	261	1.04	103	66.1	6.74	2460	251	1.04	1 - 6085	- 17	B-100	B-116	B-135		
			3340	340	1.53				3340	340	1.53	1 - 6090	- 17	B-100	B-116	B-135		
			3340	340	2.03				3340	340	2.03	1 - 6095	- 17	B-100	B-116	B-135		
			5400	550	2.65				5400	550	2.65	1 - 6100	- 17	B-101	B-117	B-136		
69.0	98.5	10.0	3340	340	1.01	83.3	81.7	8.32	3340	340	1.01	1 - 6090	- 21	B-100	B-116	B-135		
			3340	340	2.01				3340	340	2.03	1 - 6095	- 21	B-100	B-116	B-135		
			5400	550	2.53				5400	550	2.57	1 - 6100	- 21	B-101	B-117	B-136		
58.0	117	12.0	3340	340	1.15	70.0	97.2	9.91	3340	340	1.15	1 - 6095	- 25	B-100	B-116	B-135		
			5400	550	1.69				5400	550	1.69	1 - 6100	- 25	B-101	B-117	B-136		
			5400	550	2.23				5400	550	2.23	1 - 6105	- 25	B-101	B-117	B-136		
			7240	738	2.55				6810	694	2.55	1 - 6110	- 25	B-101	B-117	B-136		
7240	738	2.96	6810	694	2.96	1 - 6115	- 25	B-101	B-117	B-136								
50.0	136	13.9	3320	338	1.05	60.3	113	11.5	3340	340	1.05	1 - 6095	- 29	B-100	B-116	B-135		
			5400	550	1.61				5400	550	1.61	1 - 6100	- 29	B-101	B-117	B-136		
			5400	550	2.12				5400	550	2.12	1 - 6105	- 29	B-101	B-117	B-136		
			7410	756	2.53				7000	714	2.53	1 - 6110	- 29	B-101	B-117	B-136		
			7410	756	2.96				7000	714	2.96	1 - 6115	- 29	B-101	B-117	B-136		

GEARMOTORS

Selection Tables
0.55 kW, 0.75 kW

- "*2" indicate models manufactured with reducer and motor separately mounted on a common baseplate (horizontal shaft direction) or on an adaptor (vertical shaft direction). Consult us for details, including dimensions.
- Allowable radial load (Pro) is the value at the midpoint of the slow speed shaft.
- "*3" indicate models with reduction ratios equal to nominal ratio. Refer to Table A-3 "6000SK Series (Actual Reduction Ratio)" on page A-4 for actual reduction ratio. Indicated reduction ratio is the same as actual reduction ratio for other models.
- Maintain torque load during operation within "Output torque" in the table for models with "*" in the SF column. They cannot be operated with 100% motor rating.

Selection Tables Gearmotors #CNHM1, #CHHM1, #CNVM1, #CVVM1

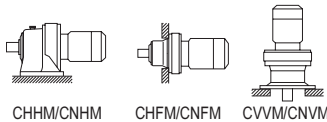


0.75 kW	Hz		50Hz		60Hz	
	P		4	6	4	6
	n ₁	r/min	1450	980	1750	1165

50Hz					60Hz					Nomenclature			Page of Dimension Sheet					
Output Speed n ₂ r/min	Output Torque Tout N·m	Output Torque Tout kgf·m	Allowable Radial Load Pro N	SF	Output Speed n ₂ r/min	Output Torque Tout N·m	Output Torque Tout kgf·m	Allowable Radial Load Pro N	SF	Input Capacity Symbol	Frame Size	Reduction Ratio	CNHM CHHM	CNFM CHFM	CNVM CVVM			
41.4	164	16.7	3270	1.01	50.0	136	13.9	3330	1.01	1 -	6095	- 35	B-100	B-116	B-135			
			5400	1.30				5400	1.30				1 -	6100	- 35	B-101	B-117	B-136
			5400	1.60				5400	1.60				1 -	6105	- 35	B-101	B-117	B-136
			7470	2.00				7490	2.00				1 -	6110	- 35	B-101	B-117	B-136
			7470	2.41				7490	2.41				1 -	6115	- 35	B-101	B-117	B-136
33.7	202	20.6	3210	0.80	40.7	167	17.0	3280	0.80	1 -	6095	- 43	B-100	B-116	B-135			
			5400	1.04				5400	1.04				1 -	6100	- 43	B-101	B-117	B-136
			5400	1.44				5400	1.44				1 -	6105	- 43	B-101	B-117	B-136
			7610	1.73				7610	1.73				1 -	6110	- 43	B-101	B-117	B-136
			7610	2.03				7610	2.03				1 -	6115	- 43	B-101	B-117	B-136
28.4	239	24.4	9810	2.55	34.3	198	20.2	9640	2.55	1 -	6120	- 43	B-101	B-117	B-136			
			5400	1.03				5390	1.03				1 -	6105	- 51	B-101	B-117	B-136
			7610	1.26				7610	1.26				1 -	6110	- 51	B-101	B-117	B-136
			7610	1.48				7610	1.48				1 -	6115	- 51	B-101	B-117	B-136
			9810	2.17				9810	2.17				1 -	6120	- 51	B-101	B-117	B-136
24.6	277	28.2	9810	2.63	29.7	229	23.4	9810	3.04	1 -	6125	- 51	B-101	B-117	B-136			
			5400	0.91				5370	0.94				1 -	6105	- 59	B-101	B-117	B-136
			7610	1.15				7610	1.15				1 -	6110	- 59	B-101	B-117	B-136
			7610	1.35				7610	1.35				1 -	6115	- 59	B-101	B-117	B-136
			9810	1.73				9810	1.73				1 -	6120	- 59	B-101	B-117	B-136
20.4	333	34.0	9810	2.16	24.6	276	28.1	9810	2.16	1 -	6125	- 59	B-101	B-117	B-136			
			13200	2.81				12400	2.92				1 -	6130	- 59	B-102	B-118	B-137
			9810	1.28				9810	1.28				1 -	6120	- 71	B-101	B-117	B-136
			9810	1.52				9810	1.60				1 -	6125	- 71	B-101	B-117	B-136
			14000	2.35				13100	2.44				1 -	6130	- 71	B-102	B-118	B-137
16.7	408	41.6	14000	2.71	20.1	338	34.5	13100	2.89	1 -	6135	- 71	B-102	B-118	B-137			
			7550	1.01				7610	1.01				1 -	6115	- 87	B-101	B-117	B-136
			9810	1.26				9810	1.26				1 -	6120	- 87	B-101	B-117	B-136
			9810	1.37				9810	1.51				1 -	6125	- 87	B-101	B-117	B-136
			14700	1.89				14200	1.89				1 -	6130	- 87	B-102	B-118	B-137
13.9	462	47.1	14700	2.20	16.8	383	39.1	14200	2.55	1 -	6135	- 87	B-102	B-118	B-137			
			16000	2.64				16000	2.64				1 -	6140	- 87	B-102	B-118	B-137
			16000	2.88				16000	3.31				1 -	6145	- 87	B-102	B-118	B-137
			9810	1.14				9810	1.37				1 -	6120DB	- 104	B-108	B-124	B-143
			9810	1.36				9810	1.64				1 -	6125DB	- 104	B-108	B-124	B-143
12.0	538	54.8	14700	1.69	14.5	446	45.4	14700	2.04	1 -	6130DB	- 104	B-109	B-125	B-144			
			14700	2.03				14700	2.13				1 -	6135DB	- 104	B-109	B-125	B-144
			16000	2.13				14700	2.45				1 -	6135DC	- 104	B-109	B-125	B-144
			16000	2.65				16000	2.13				1 -	6140DB	- 104	B-109	B-125	B-144
			16000	2.96				16000	3.20				1 -	6140DC	- 104	B-109	B-125	B-144
12.0	538	54.8	16000	2.96	14.5	446	45.4	16000	3.58	1 -	6145DC	- 104	B-109	B-125	B-144			
			9810	1.16				9810	1.40				1 -	6125DB	- 121	B-108	B-124	B-143
			14700	1.45				14700	1.75				1 -	6130DB	- 121	B-109	B-125	B-144
			14700	1.75				14700	2.11				1 -	6135DB	- 121	B-109	B-125	B-144
			16000	2.13				16000	2.13				1 -	6140DB	- 121	B-109	B-125	B-144

1. Combinations in **bold** are the recommended models for operations for 10 hours/day with uniform load (service factor is about 1.0 for motor rating at 50Hz).
2. Motor slippage may affect n₁ and n₂. Refer to technical data for details.
3. CNHM, CHHM, CNFM, CHFM, CNVM, and CVVM indicate types. Refer to page B-10 for details.
4. Lubrication method is different for each model. Refer to "Lubrication" section in page F-4~F-5 for details.
5. "6" at the end of "input capacity symbol" indicates models with 6P motor. Other models come with 4P motor.

Selection Tables Gearmotors #CNHM1, #CHHM1, #CNVM1, #CVVM1



0.75 kW	Hz		50Hz		60Hz	
	P		4	6	4	6
	n ₁	r/min	1450	980	1750	1165

n₁: Motor Speed

50Hz					60Hz					Nomenclature			Page of Dimension Sheet				
Output Speed n ₂ r/min	Output Torque Tout		Allowable Radial Load Pro		SF	Output Speed n ₂ r/min	Output Torque Tout		Allowable Radial Load Pro		SF	Input Capacity Symbol	Frame Size	Reduction Ratio	CNHM	CNFM	CNVM
	N-m	kgf-m	N	kgf			N-m	kgf-m	N	kgf							
10.1	525	53.5	9810	1000	*1	12.2	527	53.7	9810	1000	1.20	1 - 6120DB	- 143	B-108	B-124	B-143	
			9810	1000	0.98				1 - 6125DB	- 143	B-108	B-124	B-143				
			14700	1500	1.23				1 - 6130DB	- 143	B-109	B-125	B-144				
			14700	1500	1.48				1 - 6135DB	- 143	B-109	B-125	B-144				
	636	64.8	16000	1630	1.93		16000	1630	2.13	1 - 6140DB	- 143	B-109	B-125	B-144			
			16000	1630	1.93		16000	1630	2.33	1 - 6140DC	- 143	B-109	B-125	B-144			
			16000	1630	2.13		16000	1630	2.13	1 - 6145DB	- 143	B-109	B-125	B-144			
			16000	1630	2.15		16000	1630	2.60	1 - 6145DC	- 143	B-109	B-125	B-144			
22100	2250	2.76	22100	2250	3.33	1 - 6160DB	- 143	B-110	B-126	B-145							
8.79	525	53.5	9810	1000	*1	10.6	608	62.0	9810	1000	*1	1 - 6120DB	- 165	B-108	B-124	B-143	
			9810	1000	0.86				1 - 6125DB	- 165	B-108	B-124	B-143				
			14700	1500	1.06				1 - 6130DB	- 165	B-109	B-125	B-144				
			14700	1500	1.28				1 - 6135DB	- 165	B-109	B-125	B-144				
	734	74.8	16000	1630	1.67		16000	1630	2.02	1 - 6140DB	- 165	B-109	B-125	B-144			
			16000	1630	1.85		16000	1630	2.13	1 - 6145DB	- 165	B-109	B-125	B-144			
			16000	1630	1.85		16000	1630	2.23	1 - 6145DC	- 165	B-109	B-125	B-144			
			22100	2250	2.13		22100	2250	2.13	1 - 6160DA	- 165	B-110	B-126	B-145			
22100	2250	2.39	22100	2250	2.89	1 - 6160DB	- 165	B-110	B-126	B-145							
22100	2250	2.86	22100	2250	3.46	1 - 6165DB	- 165	B-110	B-126	B-145							
7.44	630	64.2	9810	1000	*1	8.97	718	73.2	9810	1000	*1	1 - 6125DB	- 195	B-108	B-124	B-143	
			14700	1500	1.08				14700	1500	1.31	1 - 6135DB	- 195	B-109	B-125	B-144	
			16000	1630	1.41				16000	1630	1.71	1 - 6140DB	- 195	B-109	B-125	B-144	
			16000	1630	1.57				16000	1630	1.89	1 - 6145DB	- 195	B-109	B-125	B-144	
	867	88.4	22100	2250	2.02		22100	2250	2.13	1 - 6160DA	- 195	B-110	B-126	B-145			
			22100	2250	2.02		22100	2250	2.44	1 - 6160DB	- 195	B-110	B-126	B-145			
			22100	2250	2.13		22100	2250	2.13	1 - 6165DA	- 195	B-110	B-126	B-145			
			22100	2250	2.42		22100	2250	2.92	1 - 6165DB	- 195	B-110	B-126	B-145			
29500	3010	2.92	29500	3010	3.52	1 - 6170DB	- 195	B-110	B-126	B-145							
6.28	630	64.2	9810	1000	*1	7.58	851	86.7	9810	1000	*1	1 - 6125DB	- 231	B-108	B-124	B-143	
			14700	1500	0.92				14700	1500	1.10	1 - 6135DB	- 231	B-109	B-125	B-144	
	780	79.5	14700	1500	*1		16000	1630	1.44	1 - 6140DB	- 231	B-109	B-125	B-144			
			16000	1630	1.30		16000	1630	1.57	1 - 6145DB	- 231	B-109	B-125	B-144			
	1030	105	22100	2250	1.71		22100	2250	2.06	1 - 6160DA	- 231	B-110	B-126	B-145			
			22100	2250	2.04		22100	2250	2.13	1 - 6165DA	- 231	B-110	B-126	B-145			
			22100	2250	2.04		22100	2250	2.47	1 - 6165DB	- 231	B-110	B-126	B-145			
			29500	3010	2.13		29500	3010	2.13	1 - 6170DA	- 231	B-110	B-126	B-145			
29500	3010	2.46	29500	3010	2.97	1 - 6170DB	- 231	B-110	B-126	B-145							
5.31	780	79.5	14700	1500	*1	6.41	1010	103	14700	1500	*1	1 - 6130DB	- 273	B-109	B-125	B-144	
			14700	1500	*1				14700	1500	*1	1 - 6135DB	- 273	B-109	B-125	B-144	
	940	95.8	16000	1630	1.01		16000	1630	1.22	1 - 6140DB	- 273	B-109	B-125	B-144			
			16000	1630	1.10		16000	1630	1.33	1 - 6145DB	- 273	B-109	B-125	B-144			
	1210	124	22100	2250	1.45		22100	2250	1.75	1 - 6160DA	- 273	B-110	B-126	B-145			
			22100	2250	1.73		22100	2250	2.09	1 - 6165DA	- 273	B-110	B-126	B-145			
			29500	3010	2.08		29500	3010	2.13	1 - 6170DA	- 273	B-110	B-126	B-145			
			29500	3010	2.08		29500	3010	2.52	1 - 6170DB	- 273	B-110	B-126	B-145			
29500	3010	2.13	29500	3010	2.13	1 - 6175DA	- 273	B-110	B-126	B-145							
29500	3010	2.60	29500	3010	3.13	1 - 6175DB	- 273	B-110	B-126	B-145							

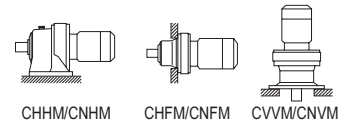
GEARMOTORS

Selection Tables
0.75 kW

- "*2" indicate models manufactured with reducer and motor separately mounted on a common baseplate (horizontal shaft direction) or on an adaptor (vertical shaft direction). Consult us for details, including dimensions.
- Allowable radial load (Pro) is the value at the midpoint of the slow speed shaft.
- "*3" indicate models with reduction ratios equal to nominal ratio. Refer to Table A-3 "6000SK Series (Actual Reduction Ratio)" on page A-4 for actual reduction ratio. Indicated reduction ratio is the same as actual reduction ratio for other models.
- Maintain torque load during operation within "Output torque" in the table for models with "*" in the SF column. They cannot be operated with 100% motor rating.

Selection Tables Gearmotors #CNHM1, #CHHM1, #CNVM1, #CVVM1

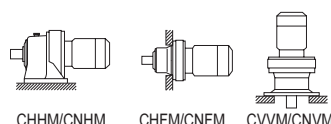
0.75 kW	Hz		50Hz		60Hz	
	P		4	6	4	6
	n ₁	r/min	1450	980	1750	1165



50Hz						60Hz						Nomenclature			Page of Dimension Sheet				
Output Speed n ₂	Output Torque Tout		Allowable Radial Load Pro		SF	Output Speed n ₂	Output Torque Tout		Allowable Radial Load Pro		SF	Input Capacity Symbol	Frame Size	Reduction Ratio	CNHM	CNFM	CNVM		
r/min	N·m	kgf·m	N	kgf		r/min	N·m	kgf·m	N	kgf					CHHM	CHFM	CVVM		
4.55	940	95.8	14700	1500	*1	940	95.8	14700	1500	*1	*1	1 - 6135DB	- 319	B-109	B-125	B-144			
			15500	1580	0.97				16000	1630				1.17	1 - 6145DB	- 319	B-109	B-125	B-144
	1420	145	22100	2250	1.24	5.49	1180	120	22100	2250	1.49	*1	1 - 6160DA	- 319	B-110	B-126	B-145		
			22100	2250	1.48				22100	2250	1.79				1 - 6165DA	- 319	B-110	B-126	B-145
			29500	3010	1.78				29500	3010	2.13				1 - 6170DA	- 319	B-110	B-126	B-145
			29500	3010	1.78				29500	3010	2.15				1 - 6170DB	- 319	B-110	B-126	B-145
			29500	3010	2.13				29500	3010	2.13				1 - 6175DA	- 319	B-110	B-126	B-145
			29500	3010	2.22				29500	3010	2.68				1 - 6175DB	- 319	B-110	B-126	B-145
41700	4250	2.86	41700	4250	3.45	1 - 6180DA	- 319	B-110	B-126	B-145									
3.85	1230	125	16000	1630	*1	1230	125	16000	1630	*1	*1	1 - 6140DB	- 377	B-109	B-125	B-144			
			15800	1610	*1				15800	1610				*1	1 - 6145DB	- 377	B-109	B-125	B-144
	1680	171	14100	1440	0.82	4.64	1390	142	15700	1600	0.98	*1	1 - 6145DB	- 377	B-109	B-125	B-144		
			22100	2250	1.05				22100	2250	1.26				1 - 6160DA	- 377	B-110	B-126	B-145
			22100	2250	1.25				22100	2250	1.51				1 - 6165DA	- 377	B-110	B-126	B-145
			29500	3010	1.51				29500	3010	1.82				1 - 6170DA	- 377	B-110	B-126	B-145
			29500	3010	1.88				29500	3010	2.13				1 - 6175DA	- 377	B-110	B-126	B-145
			29500	3010	1.88				29500	3010	2.27				1 - 6175DB	- 377	B-110	B-126	B-145
41700	4250	2.42	41700	4250	2.92	1 - 6180DA	- 377	B-110	B-126	B-145									
41700	4250	2.98	41700	4250	3.60	1 - 6185DA	- 377	B-110	B-126	B-145									
3.07	1370	140	15700	1600	*1	1370	140	15700	1600	*1	*1	1 - 6145DB	- 473	B-109	B-125	B-144			
			22100	2250	*1				22100	2250				*1	1 - 6160DA	- 473	B-110	B-126	B-145
	2100	214	22100	2250	1.00	3.70	1740	178	22100	2250	1.21	*1	1 - 6165DA	- 473	B-110	B-126	B-145		
			29500	3010	1.20				29500	3010	1.45				1 - 6170DA	- 473	B-110	B-126	B-145
			29500	3010	1.50				29500	3010	1.81				1 - 6175DA	- 473	B-110	B-126	B-145
			41700	4250	1.93				41700	4250	2.33				1 - 6180DA	- 473	B-110	B-126	B-145
41700	4250	2.38	41700	4250	2.87	1 - 6185DA	- 473	B-110	B-126	B-145									
2.59	1740	177	22100	2250	*1	1740	177	22100	2250	*1	*1	1 - 6160DA	- 559	B-110	B-126	B-145			
			22100	2250	0.85			22100	2250	1.02				1 - 6165DA	- 559	B-110	B-126	B-145	
	2490	253	29500	3010	1.02	3.13	2060	210	29500	3010	1.23	*1	1 - 6170DA	- 559	B-110	B-126	B-145		
			29500	3010	1.27				29500	3010	1.53				1 - 6175DA	- 559	B-110	B-126	B-145
			41700	4250	1.63				41700	4250	1.97				1 - 6180DA	- 559	B-110	B-126	B-145
			41700	4250	2.01				41700	4250	2.43				1 - 6185DA	- 559	B-110	B-126	B-145
59000	6010	2.57	59000	6010	3.10	1 - 6190DA	- 559	B-111	B-128	B-147									
2.23	2100	214	22100	2250	*1	2100	214	22100	2250	*1	*1	1 - 6165DA	- 649	B-110	B-126	B-145			
			29500	3010	1.09			29500	3010	1.32				1 - 6175DA	- 649	B-110	B-126	B-145	
	2890	294	41700	4250	1.40	2.70	2390	244	41700	4250	1.69	*1	1 - 6180DA	- 649	B-110	B-126	B-145		
			41700	4250	1.73				41700	4250	2.09				1 - 6185DA	- 649	B-110	B-126	B-145
			59000	6010	2.21				59000	6010	2.67				1 - 6190DA	- 649	B-111	B-128	B-147
			59000	6010	2.76				59000	6010	3.33				1 - 6195DA	- 649	B-111	B-128	B-147
1.98	2100	214	22100	2250	*1	2100	214	22100	2250	*1	*1	1 - 6165DA	- 731	B-110	B-126	B-145			
			29500	3010	*1			29500	3010	*1				1 - 6170DA	- 731	B-110	B-126	B-145	
	3250	331	29500	3010	0.97	2.39	2690	274	29500	3010	1.17	*1	1 - 6175DA	- 731	B-110	B-126	B-145		
			41700	4250	1.25				41700	4250	1.51				1 - 6180DA	- 731	B-110	B-126	B-145
			41700	4250	1.54				41700	4250	1.86				1 - 6185DA	- 731	B-110	B-126	B-145
			59000	6010	1.96				59000	6010	2.37				1 - 6190DA	- 731	B-111	B-128	B-147
59000	6010	2.45	59000	6010	2.96	1 - 6195DA	- 731	B-111	B-128	B-147									
1.72	2530	258	29500	3010	*1	2530	258	29500	3010	*1	*1	1 - 6170DA	- 841	B-110	B-126	B-145			
			29500	3010	0.84			29500	3010	1.02				1 - 6175DA	- 841	B-110	B-126	B-145	
	3740	381	41700	4250	1.08	2.08	3100	316	41700	4250	1.31	*1	1 - 6180DA	- 841	B-110	B-126	B-145		
			41700	4250	1.34				41700	4250	1.61				1 - 6185DA	- 841	B-110	B-126	B-145
			59000	6010	1.71				59000	6010	2.06				1 - 6190DA	- 841	B-111	B-128	B-147
			59000	6010	2.13				59000	6010	2.57				1 - 6195DA	- 841	B-111	B-128	B-147
1.45	3150	321	29500	3010	*1	3150	321	29500	3010	*1	*1	1 - 6175DA	- 1003	B-110	B-126	B-145			
			41700	4250	1.12			41700	4250	1.35				1 - 6185DA	- 1003	B-110	B-126	B-145	
	4460	455	59000	6010	1.43	1.74	3690	377	59000	6010	1.73	*1	1 - 6190DA	- 1003	B-111	B-128	B-147		
			59000	6010	1.79				59000	6010	2.15				1 - 6195DA	- 1003	B-111	B-128	B-147

1. Combinations in **bold** are the recommended models for operations for 10 hours/day with uniform load (service factor is about 1.0 for motor rating at 50Hz).
2. Motor slippage may affect n₁ and n₂. Refer to technical data for details.
3. CNHM, CHHM, CNFM, CHFM, CNVM, and CVVM indicate types. Refer to page B-10 for details.
4. Lubrication method is different for each model. Refer to "Lubrication" section in page F-4~F-5 for details.
5. "6" at the end of "input capacity symbol" indicates models with 6P motor. Other models come with 4P motor.

Selection Tables Gearmotors #CNHM1, #CHHM1, #CNVM1, #CVVM1



CHHM/CNHM

CHF/CNFM

CVVM/CNVM

0.75 kW	Hz		50Hz		60Hz	
	P		4	6	4	6
	n ₁	r/min	1450	980	1750	1165

n₁: Motor Speed

50Hz						60Hz					Nomenclature			Page of Dimension Sheet			
Output Speed n ₂ r/min	Output Torque Tout		Allowable Radial Load Pro		SF	Output Speed n ₂ r/min	Output Torque Tout		Allowable Radial Load Pro		SF	Input Capacity Symbol	Frame Size	Reduction Ratio	CNHM	CNFM	CNVM
	N-m	kgf-m	N	kgf			N-m	kgf-m	N	kgf							
1.16	4060	414	41700	4250	*1	1.40	4060	414	41700	4250	*1	1 -	6180DA	-1247	B-110	B-126	B-145
	5540	565	41700	4250	0.90		41700	4250	1.09	1 -	6185DA	-1247	B-110	B-126	B-145		
			59000	6010	1.15		59000	6010	1.39	1 -	6190DA	-1247	B-111	B-128	B-147		
0.980	4060	414	41700	4250	*1	1.18	4060	414	41700	4250	*1	1 -	6180DA	-1479	B-110	B-126	B-145
	5000	510	41700	4250	*1		5000	510	41700	4250	*1	1 -	6185DA	-1479	B-110	B-126	B-145
	6580	670	58800	5990	1.21		6580	670	58800	6010	1.46	1 -	6195DA	-1479	B-111	B-128	B-147
0.784	5000	510	41700	4250	*1	0.946	5000	510	41700	4250	*1	1 -	6185DA	-1849	B-110	B-126	B-145
	6380	650	59000	6010	*1		6380	650	59000	6010	*1	1 -	6190DA	-1849	B-111	B-128	B-147
	8220	838	58900	6000	0.97		8220	838	58900	6010	1.17	1 -	6195DA	-1849	B-111	B-128	B-147
0.702	5000	510	41600	4240	*1	0.847	5000	510	41600	4240	*1	1 -	6185DA	-2065	B-110	B-126	B-145
	6380	650	58600	5970	*1		6380	650	58600	5970	*1	1 -	6190DA	-2065	B-111	B-128	B-147
	9180	936	57800	5890	0.87		9180	936	57800	5940	1.05	1 -	6195DA	-2065	B-111	B-128	B-147
0.572	6380	650	58600	5970	*1	0.690	6380	650	58600	5970	*1	1 -	6190DA	-2537	B-111	B-128	B-147
	7960	811	58100	5930	*1		7960	811	58100	5930	*1	1 -	6195DA	-2537	B-111	B-128	B-147
	9300	948	84100	8570	*1		9300	948	84100	8570	*1	1 -	6205DA	-2537	B-112	B-129	B-148
	11300	1150	84100	8570	0.82		11300	1150	84100	8570	1.00	1 -	6205DA	-2537	B-112	B-129	B-148
0.476	6380	650	58900	6000	*1	0.575	6380	650	58900	6000	*1	1 -	6190DA	-3045	B-111	B-128	B-147
	7960	811	58400	5950	*1		7960	811	58400	5950	*1	1 -	6195DA	-3045	B-111	B-128	B-147
	8760	893	84100	8570	*1		8760	893	84100	8570	*1	1 -	6205DA	-3045	B-112	B-129	B-148
0.417	6380	650	58600	5970	*1	0.503	6380	650	58600	5970	*1	1 -	6190DA	-3481	B-111	B-128	B-147
	7960	811	58100	5930	*1		7960	811	58100	5930	*1	1 -	6195DA	-3481	B-111	B-128	B-147
	9300	948	84100	8570	*1		9300	948	84100	8570	*1	1 -	6205DA	-3481	B-112	B-129	B-148
0.327	6380	650	58900	6000	*1	0.394	6380	650	58900	6000	*1	1 -	6190DA	-4437	B-111	B-128	B-147
	7960	811	58400	5950	*1		7960	811	58400	5950	*1	1 -	6195DA	-4437	B-111	B-128	B-147
	8760	893	84100	8570	*1		8760	893	84100	8570	*1	1 -	6205DA	-4437	B-112	B-129	B-148
0.282	6380	650	58900	6000	*1	0.341	6380	650	58900	6000	*1	1 -	6190DA	-5133	B-111	B-128	B-147
	7960	811	58400	5950	*1		7960	811	58400	5950	*1	1 -	6195DA	-5133	B-111	B-128	B-147
	9300	948	84100	8570	*1		9300	948	84100	8570	*1	1 -	6205DA	-5133	B-112	B-129	B-148
0.235	6380	650	58900	6000	*1	0.283	6380	650	58900	6000	*1	1 -	6190DA	-6177	B-111	B-128	B-147
	7960	811	58400	5950	*1		7960	811	58400	5950	*1	1 -	6195DA	-6177	B-111	B-128	B-147
	8760	893	84100	8570	*1		8760	893	84100	8570	*1	1 -	6205DA	-6177	B-112	B-129	B-148
0.192	6380	650	58900	6000	*1	0.231	6380	650	58900	6000	*1	1 -	6190DA	-7569	B-111	B-128	B-147
	7960	811	58400	5950	*1		7960	811	58400	5950	*1	1 -	6195DA	-7569	B-111	B-128	B-147
	8760	893	84100	8570	*1		8760	893	84100	8570	*1	1 -	6205DA	-7569	B-112	B-129	B-148

GEARMOTORS

Selection Tables
0.75 kW

- "*2" indicate models manufactured with reducer and motor separately mounted on a common baseplate (horizontal shaft direction) or on an adaptor (vertical shaft direction). Consult us for details, including dimensions.
- Allowable radial load (Pro) is the value at the midpoint of the slow speed shaft.
- "*3" indicate models with reduction ratios equal to nominal ratio. Refer to Table A-3 "6000SK Series (Actual Reduction Ratio)" on page A-4 for actual reduction ratio. Indicated reduction ratio is the same as actual reduction ratio for other models.
- Maintain torque load during operation within "Output torque" in the table for models with "*" in the SF column. They cannot be operated with 100% motor rating.